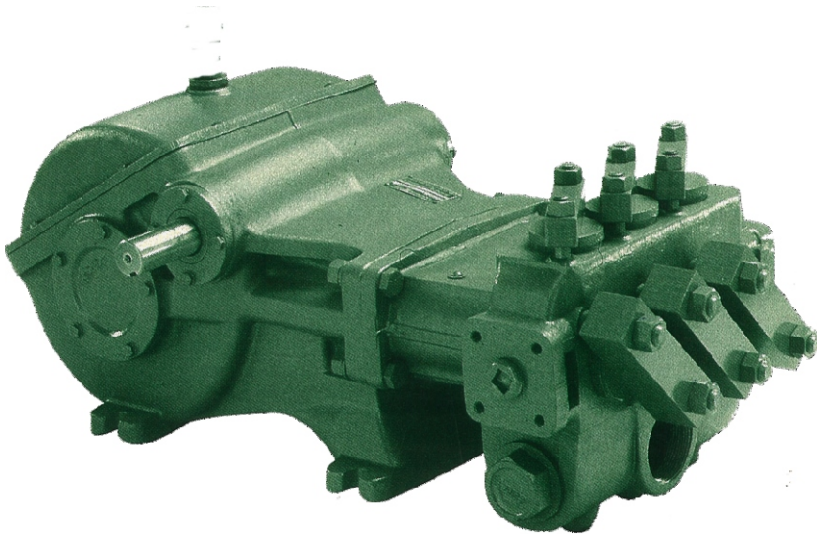


# D40, D50, D55, D60, D65, D70

# High pressure Reciprocating Pumps

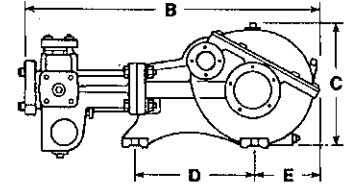
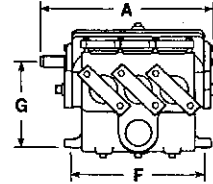


The D Series combines WASP manufacturing expertise and understanding of applications to provide a pump that is perfect for every high pressure job. At WASP we know your need and we deliver.

A high strength fluid end with spring loaded flat valves for pumping large volumes of water under high pressures 152 Bar. Handles liquids up to 180° F in mines, mills, food processing, and car/truck washes.

This is a high-volume, high-pressure piston Pump. Can't be beat for hydraulic blasting and cleaning, sewer cleaning, fire truck, injection, able service in many exacting industrial high pressure applications.

This pump's large 400 LPM volume of flow at up to 152 Bar makes it perfect for sewer blasting as well as extra heavy duty industrial and marine cleaning. The compact, powerful design is also right for strata loosening, long distance pump-vehicle cleaning.



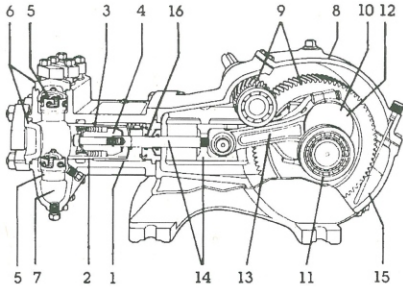
## SPECIFICATIONS

Catalog Number	Maximum Rated Pressure PSI (BAR)	Maximum Rated Capacity GPM (LPM)	Gear Reduction Ratio	Temperature Rating F (C)	Size In Inches (millimeters)						Weight LBS (KG)	Dimensions In Inches (millimeters)							
					Cylinder Bore	Piston Stroke	Discharge Size (NPT)	Input Shaft	Input Shaft	Keyway		A	B	C	D	E	F	G	DIAMETER OF MOUNTING HOLE
D40-8 Triplex	800 55	40 151	3.95 to 1	140 60	2.250 57.15	3.750 95.25	2 50.80	1 1/4 31.75	1 5/8 41.3	3/8 x 3/16 9.53 x 4.75	525 238	21 533.4	34.5 867.3	15.25 387.35	14 355.6	7.5 190.5	16 406.4	10.38 263.6	.75 19.05
D50-12 Triplex	1200 83	50 189.2	3.95 to 1	140 60	2.250 57.15	3.750 95.25	2 50.80	1 1/4 31.75	1 5/8 41.3	3/8 x 3/16 9.53 x 4.75	525 238	21 533.4	34.5 867.3	15.25 387.95	14 355.6	7.5 190.5	16 406.4	10.38 263.6	.75 19.06
D55-8 Triplex	800 55	55 207.9	3.95 to 1	140 60	2.250 57.15	3.750 95.25	2 50.80	1 1/4 31.75	1 5/8 41.3	3/8 x 3/16 9.53 x 4.75	525 238	21 533.4	34.5 867.3	15.25 387.95	14 355.6	7.5 190.5	16 406.4	10.38 263	.75 19.06
D60-10 Triplex	1000 69	60 227.12	3.95 to 1	140 60	2.500 63.50	3.750 95.25	3 76.20	1 1/4 31.75	1 5/8 41.3	3/8 x 3/16 9.53 x 4.75	525 238	21 533.4	34.5 867.3	17 431.8	14 355.6	7.5 190.5	16 406.4	10.38 263.65	.75 19.05
D65-16 Triplex	1600 110	65 246.05	3.95 to 1	180 82	2.125 53.98	3.750 96.25	3 76.20	1 1/4 31.75	1 5/8 41.3	3/8 x 3/16 9.53 x 4.75	525 238	21 533.4	34.5 920.75	17 431.8	14 355.6	7.5 190.5	16 406.4	10.38 263.65	.75 19.05
D65-20 Triplex	2000 138	65 246.05	3.95 to 1	180 82	2.00 50.80	3.750 96.25	3 76.20	1 1/4 31.75	1 5/8 41.3	3/8 x 3/16 9.53 x 4.75	525 238	21 533.4	34.5 920.75	17 431.8	14 355.6	7.5 190.5	16 406.4	10.38 263.65	.75 19.05
D70-22 Triplex	2200 152	70 265	3.95 to 1	180 82	3.00 76.20	3.750 96.25	3 76.20	1 1/4 31.75	1 5/8 41.3	3/8 x 3/16 9.53 x 4.75	525 238	21 533.4	34.5 920.75	17 431.8	14 355.6	7.5 190.5	16 406.4	10.38 263.65	.75 19.05



# D40, D50, D55, D60, D65, D70

# High pressure Reciprocating Pumps



## FLUID-END COMPONENTS

1. Cylinder body of high-strength ductile iron or aluminum-bronze for salt water application.
2. Cylinders are tapered steel shells with (optional) super-smooth hard K-ramic coating. Easily replaceable.
3. Packing: Buna-N & cotton duck multi-lip V-rin supported by a phenolic follower

4. Piston assembly: Stud, pressure ring, spring, retainer and cap screw are all solid stainless steel.
5. Valve assemblies are spring-loaded flat valves having stainless steel seats, springs and valves with long-wearing. stainless steel retainer stainless steel center post type feature delrin valves.
6. Valve & cylinder caps of tough cast iron with Buna-N O-ring seals. Caps are rigidly held in place removable steel clamps.
7. Suction & discharge located for easy service. Large threaded suction opening on sides and/or front. Discharge openings are flanged and tapped.

## POWER -END COMPONENTS

8. Gearcase of rugged cast iron protects the gears and serves as oil reservoir for continuous lubrication. Cover section quickly removable for easy service.

9. Pinion & main gear are helical cut and machined from high-strength alloy steel, and rotate in either direction. Integral pinion shaft is also machined from high-strength alloy steel.
10. Automotive type crankshaft is of high-strength ductile iron.
11. Shaft bearings feature tapered roller bearings.
12. Crankshaft journal bearings are automotive Type, steel-backed inserts.
13. Connecting links are ductile iron with replaceable bronze wrist-pin bearings. Wrist pins are press-fitted into the crossheads.
14. Crossheads/piston "pony" rods: Heavy-duty ductile iron crossheads "pony" rods are smoothly-ground and highly -polished stainless steel, threaded and pinned axially to crosshead.
15. Continuous splash lubrication is provided during either direction of rotation.

## H.P. REQUIREMENT

D 40 - 8					
L. P. M.	R. P. M.	H.P. REQUIRED FOR			
		PRESSURE IN BAR			
		34.5	41.4	48.3	55.2
106.3	500	10.5	12.5	14.5	16.5
126.0	600	12.7	14.7	16.8	18.9
144.6	700	14.5	16.9	19.3	21.7
161.6	800	16.2	19.0	21.7	24.5

D 50 - 12						
L. P. M.	R. P. M.	H.P. REQUIRED FOR				
		PRESSURE IN BAR				
		27.6	41.4	55.2	69.0	82.8
147.6	825	11.5	16.2	21.2	26.5	31.0
167.6	925	12.7	18.0	23.0	28.5	33.7
186.6	1025	14.2	20.0	25.5	31.8	38.0
195.0	1075	15.0	20.6	26.4	33.5	41.0

D 60 - 10					
L. P. M.	R. P. M.	H.P. REQUIRED FOR			
		PRESSURE IN BAR			
		27.6	41.4	55.2	69.0
183.5	825	13.4	18.9	24.1	30.0
206.0	925	15.0	20.9	26.9	33.5
227.5	1025	16.8	22.9	30.9	39.0
238.5	1075	17.4	24.1	32.0	41.0

D 65 - 16					
L. P. M.	R. P. M.	H.P. REQUIRED FOR			
		PRESSURE IN BAR			
		69.0	82.8	96.6	110.4
183.6	1112	32.5	39.0	45.5	52.0
206.0	1247	36.5	43.8	51.1	58.4
238.8	1940	42.3	50.8	59.3	67.7
246.0	1490	43.6	52.3	61.1	69.8
259.3	1570	46.0	55.2	64.3	73.5

D 65 - 20					
L. P. M.	R. P. M.	H.P. REQUIRED FOR			
		PRESSURE IN BAR			
		69.0	82.8	124.2	138.0
139.6	1000	24.4	29.2	42.7	47.3
167.5	1200	29.3	34.7	51.2	55.8
193.0	1400	33.5	39.8	55.8	65.1
216.3	1600	38.6	44.4	66.3	73.4
244.1	1800	44.0	51.4	74.9	82.6

D 70 - 22					
L. P. M.	R. P. M.	H.P. REQUIRED FOR			
		PRESSURE IN BAR			
		69.0	82.8	110.4	151.7
218.0	1200	39.8	47.9	63.7	87.7
255.0	1400	46.5	60.0	74.5	102.7
291.0	1600	53.0	63.8	85.0	116.2
327.0	1800	59.7	71.8	95.4	130.6
400.0	2200	73.5	87.8	115.8	159.8

## WASP PUMPS PVT. LTD.

Regd. Sales Office & Works:  
Chitalsar Manpada, Swami Vivekananda Road, Thane - 400 607.  
Tele Fax No. : 2589 3457. E-mail :- wasppumps@rediffmail.com