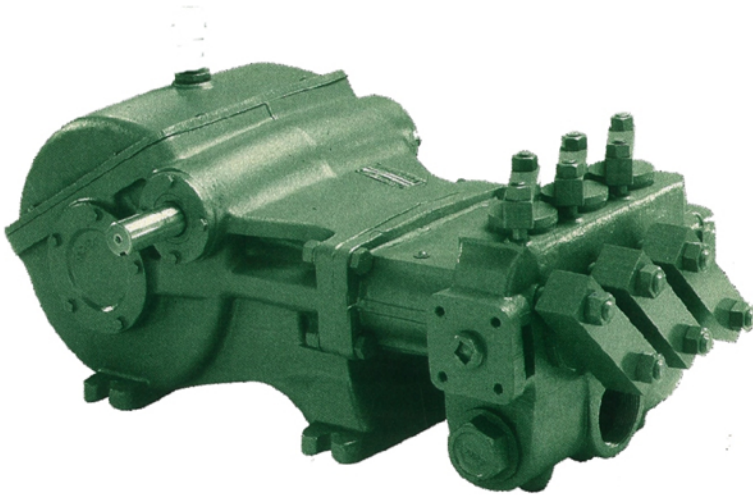


# D40, D50, D55, D60, D65, D70

# High Pressure Reciprocating Pumps

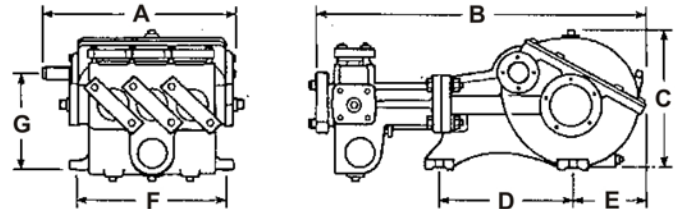


The D Series combines 'WASP' manufacturing expertise and understanding of applications to provide a pump that is perfect for every high pressure job. They are manufactured in technical collaboration with FE Myers, U.S.A., one of the leading manufacturers of high quality pumps in the world and pioneers in high pressure pumping. At WASP we know your need and we deliver.

A high strength fluid end with spring loaded flat valves for pumping large volumes of water under high pressures 152 Bar. Handles liquids upto 180° F in mines, food processing and car/truck washes.

This is a high volume, high pressure piston pump. Can't be beaten for hydraulic blasting and cleaning, sewer cleaning, fire truck, injection, able service in many exacting industrial high pressure applications.

This pump's large 400 LPM volume of flow at upto 152 Bar makes it perfect for sewer blasting as well as extra heavy duty industrial and marine cleaning. The compact, powerful design is also right for strata loosening, long distance pump vehicle cleaning.



## SPECIFICATIONS

Catalog Number	Maximum Rated Pressure PSI (BAR)	Maximum Rated Capacity GPM (LPM)	Gear Reduction Ratio	Temperature Rating F (C)	Size In Inches (millimeters)						Wt ght L BS (KG)	Dimensions In Inches (millimeters)							
					Cylinder Bore	Piston Stroke	Suction Size	Discharge Size (NPT)	Input Shaft	Keyway		A	B	C	D	E	F	G	DIAMETER OF MOUNTING HOLE
D40-8 Triplex	800	40	3.95 to 1	140	2.250	3.750	2	1/4	15/8	3/8 x 3/16	525	21	34.5	15.25	14	7.5	16	10.38	.75
	55	151			57.15	95.25	50.48	31.75	41.3	9.53 x 4.75	238	533.4	867.3	387.35	355.6	190.5	406.4	263.6	19.05
D50-12 Triplex	1200	50	3.95 to 1	140	2.250	3.750	2	1/4	15/8	3/8 x 3/16	525	21	34.5	15.25	14	7.5	16	10.38	.75
	83	189.2			57.15	95.25	50.80	31.75	41.3	9.53 x 4.75	238	533.4	867.3	387.95	355.6	190.5	406.4	263.6	19.06
D55-8 Triplex	800	55	3.95 to 1	140	2.250	3.750	2	1/4	15/8	3/8 x 3/16	525	21	34.5	15.25	14	7.5	16	10.38	.75
	55	207.9			57.15	95.25	50.80	31.75	41.3	9.53 x 4.75	238	533.4	867.3	387.95	355.6	190.5	406.4	263	19.06
D60-10 Triplex	1000	60	3.95 to 1	140	2.500	3.750	3	1/4	15/8	3/8 x 3/16	525	21	34.5	17	14	7.5	16	10.38	.75
	69	227.12			63.50	95.25	76.20	31.75	41.3	9.53 x 4.75	238	533.4	867.3	431.8	355.6	190.5	406.4	263.65	19.05
D65-16 Triplex	1600	65	3.95 to 1	180	2.125	3.750	3	1/4	15/8	3/8 x 3/16	525	21	34.5	17	14	7.5	16	10.38	.75
	110	246.05			53.98	96.25	76.20	31.75	41.3	9.53 x 4.75	238	533.4	920.75	431.8	355.6	190.5	406.4	263.65	19.05
D65-20 Triplex	2000	65	3.95 to 1	180	2.00	3.750	3	1/4	15/8	3/8 x 3/16	525	21	34.5	17	14	7.5	16	10.38	.75
	138	246.05			50.80	96.25	76.20	31.75	41.3	9.53 x 4.75	238	533.4	920.75	431.8	355.6	190.5	406.4	263.65	19.05
D70-22 Triplex	2200	70	3.95 to 1	180	3.00	3.750	3	1/4	15/8	3/8 x 3/16	525	21	34.5	17	14	7.5	16	10.38	.75
	152	265			76.20	96.25	76.20	31.75	41.3	9.53 x 4.75	238	533.4	920.75	431.8	355.6	190.5	406.4	263.65	19.05

# D40, D50, D55, D60, D65, D70

## High Pressure Reciprocating Pumps



### FLUID - END COMPONENTS

**Cylinder Body** of high strength ductile iron or aluminium-bronze for salt water application

**Cylinders** are tapered steel shells with (optional) super smooth hard K-ramic coating. Easily replaceable.

**Packing** is of Buna-N & cotton duck multi-lip V-rin supported by a phenotic follower.

**Special packing seal** is provided against plunger with no-wear sensitive lips.

**Piston Assembly** consists of stud, pressure ring, spring, retainer and cap screw - all solid stainless steel.

**Valve Assemblies** are spring loaded flat valves having stainless steel seats, springs and valves with long wearing stainless steel retainer stainless steel center post type feature delrin valves.

**Valve & Cylinder Caps** of tough cast iron with Buna-N O-ring seals. Caps are rigidly held in place removable steel clamps.

**Suction & discharge** located for easy service. Large threaded suction opening on sides and/or front. Discharge openings are flanged and tapped.

### POWER - END COMPONENTS

**Gearcase** of rugged cast iron protects the gears and serves as oil reservoir for continuous lubrication. Cover section quickly removable for easy service.

**Pinion & main gear** are helical cut and machined from high-strength alloy steel, and rotate in either direction. Integral pinion shaft is also machined from high-strength alloy steel.

**Automotive type crankshaft** is of high strength ductile iron.

**Shaft bearings** feature tapered roller bearings.

**Crankshaft journal bearings** are automotive type, steel-backed inserts.

**Connecting links** are ductile iron with replaceable bronze wrist-pin bearings. Wrist pins are press fitted into the crossheads.

**Piston "pony" rods** are smoothly ground and highly - polished stainless steel, threaded and pinned axially to crosshead.

Continuous splash lubrication is provided during either direction of rotation.

### H. P. REQUIREMENT

D 40 - 8					
L. P. M.	R. P. M.	H.P. REQUIRED FOR			
		PRESSURE IN BAR			
		34.5	41.4	48.3	55.2
106.3	500	10.5	12.5	14.5	16.5
126.0	600	12.7	14.7	16.8	18.9
144.6	700	14.5	16.9	19.3	21.7
161.6	800	16.2	19.0	21.7	24.5

D 50 - 12						
L. P. M.	R. P. M.	H.P. REQUIRED FOR				
		PRESSURE IN BAR				
		27.6	41.4	55.2	69.0	82.8
147.6	825	11.5	16.2	21.2	26.5	31.0
167.6	925	12.7	18.0	23.0	28.5	33.7
186.6	1025	14.2	20.0	25.5	31.8	38.0
195.0	1075	15.0	20.6	26.4	33.5	41.0

D 60 - 10					
L. P. M.	R. P. M.	H.P. REQUIRED FOR			
		PRESSURE IN BAR			
		27.6	41.4	55.2	69.0
183.5	825	13.4	18.9	24.1	30.0
206.0	925	15.0	20.9	26.9	33.5
227.5	1025	16.8	22.9	30.9	39.0
238.5	1075	17.4	24.1	32.0	41.0

D 65 - 16					
L. P. M.	R. P. M.	H.P. REQUIRED FOR			
		PRESSURE IN BAR			
		69.0	82.8	96.6	110.4
183.6	1112	32.5	39.0	45.5	52.0
206.0	1247	36.5	43.8	51.1	58.4
238.8	1446	42.3	50.8	59.3	67.7
246.0	1490	43.6	52.3	61.1	69.8
259.3	1570	46.0	55.2	64.3	73.5

D 65 - 20					
L. P. M.	R. P. M.	H.P. REQUIRED FOR			
		PRESSURE IN BAR			
		69.0	82.8	124.2	138.0
139.6	1000	24.4	29.2	42.7	47.3
167.5	1200	29.3	34.7	51.2	55.8
193.0	1400	33.5	39.8	55.8	65.1
216.3	1600	38.6	44.4	66.3	73.4
244.1	1800	44.0	51.4	74.9	82.6

D 70 - 22					
L. P. M.	R. P. M.	H.P. REQUIRED FOR			
		PRESSURE IN BAR			
		69.0	82.8	110.4	151.7
218.0	1200	39.8	47.9	63.7	87.7
255.0	1400	46.5	60.0	74.5	102.7
291.0	1600	53.0	63.8	85.0	
327.0	1800	59.7	71.8	95.4	
400.0	2200	73.5	87.8		



www.wasppumps.com

## WASP PUMPS (INDIA) LLP

Regd. Sales Office & Works:

Plot No. 113, Road No. 21, Wagle Industrial Estate, Thane 400604

GST: 27AAFFW0904N1ZX, Tel: +91 98210 21183,

Email: wasppumps@rediffmail.com Website : www.wasppumps.com

