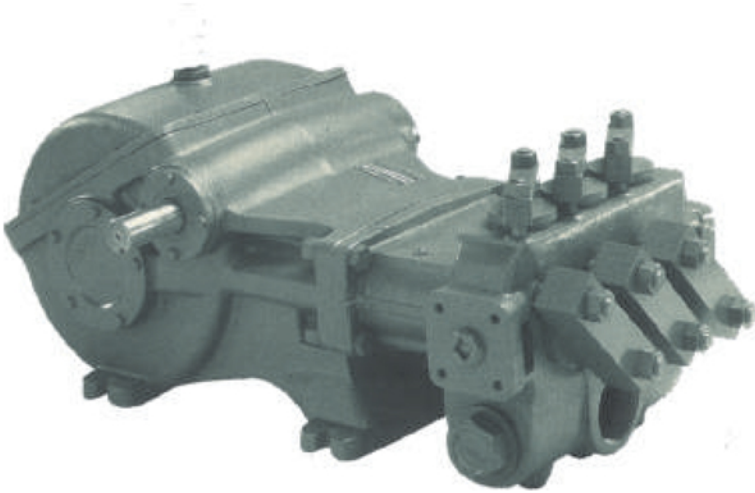


D80, D95, D105, D125

High Pressure / High Discharge
Reciprocating Pumps



The D Series combines 'WASP' manufacturing expertise and understanding of applications to provide a pump that is perfect for every high pressure job. They are manufactured in technical collaboration with FE Myers, U.S.A., one of the leading manufacturers of high quality pumps in the world and pioneers in high pressure pumping. At WASP we know your need and we deliver.

A high strength fluid end with spring loaded flat valves for pumping large volumes of water under high pressures 152 Bar. Handles liquids upto 180° F in mines, food processing and car/truck washes.

This is a high volume, high pressure piston pump. Can't be beaten for hydraulic blasting and cleaning, sewer cleaning, fire truck, injection, able service in many exacting industrial high pressure applications.

This pump's large 488 LPM volume of flow and pressure upto 152 Bar makes it perfect for sewer blasting as well as extra heavy duty industrial and marine cleaning. The compact, powerful design is also right for strata loosening, long distance pump vehicle cleaning

INDUSTRIES WE SERVE



Foundries



Chemical



Oil & Gas



Industrial



Paint Industry



Pharmaceutical



Rolling Mills



Steel Plant

D80, D95, D105, D125

High Pressure / High Discharge Reciprocating Pumps



FLUID - END COMPONENTS

Cylinder Body of high strength ductile iron or aluminium-bronze for salt water application

Cylinders are tapered steel shells with (optional) super smooth hard K-ramic coating. Easily replaceable.

Packing is of Buna-N & cotton duck multi-lip V-rin supported by a phenotic follower.

Special packing seal is provided against plunger with no-wear sensitive lips.

Piston Assembly consists of stud, pressure ring, spring, retainer and cap screw - all solid stainless steel.

Valve Assemblies are spring loaded flat valves having stainless steel seats, springs and valves with long wearing stainless steel retainer stainless steel center post type feature delrin valves.

Valve & Cylinder Caps of tough cast iron with Buna-N O-ring seals. Caps are rigidly held in place removable steel clamps.

Suction & discharge located for easy service. Large threaded suction opening on sides and/or front. Discharge openings are flanged and tapped.

POWER - END COMPONENTS

Gearcase of rugged cast iron protects the gears and serves as oil reservoir for continuous lubrication. Cover section quickly removable for easy service.

Pinion & main gear are helical cut and machined from high-strength alloy steel, and rotate in either direction. Integral pinion shaft is also machined from high-strength alloy steel.

Automotive type crankshaft is of high strength ductile iron.

Shaft bearings feature tapered roller bearings.

Crankshaft journal bearings are automotive type, steel-backed inserts.

Connecting links are ductile iron with replaceable bronze wrist-pin bearings. Wrist pins are press fitted into the crossheads.

Piston "pony" rods are smoothly ground and highly - polished stainless steel, threaded and pinned axially to crosshead.

Continuous splash lubrication is provided during either direction of rotation.

H. P. REQUIREMENT

D 80 - 22							
L. P. M.	R. P. M.	H.P. REQUIRED FOR PRESSURE IN BAR					
		69.0	82.8	96.6	110.4	138.0	151.7
195	1400	33.5	40.2	46.9	53.5	66.9	73.6
201	1440	34.4	41.3	48.2	55.1	68.8	75.7
223	1600	38.2	45.9	53.5	61.2	76.5	84.1
251	1800	43.0	51.6	60.2	68.8	86.1	94.6
279	2000	47.8	57.4	66.9	76.5	95.6	105.1
307	2200	52.6	63.1	73.6	84.1	105.2	

D 95 - 22							
L. P. M.	R. P. M.	H.P. REQUIRED FOR PRESSURE IN BAR					
		69.0	82.8	96.6	110.4	138.0	151.7
231	1400	39.6	47.5	55.4	63.4	79.2	87.1
238	1440	40.7	48.9	57.0	65.2	81.5	89.5
264	1600	45.3	54.3	63.4	72.4	90.5	99.5
297	1800	50.9	61.1	71.3	81.5	101.8	
330	2000	56.6	67.9	79.2	90.5		
363	2200	62.2	74.7	87.1	99.6		

D 125 - 22							
L. P. M.	R. P. M.	H.P. REQUIRED FOR PRESSURE IN BAR					
		69.0	82.8	96.6	110.4	138.0	151.7
311	1400	53.2	63.8	74.5	85.1	106.4	
320	1440	42.2	50.6	59.1	67.5	84.4	
355	1600	60.8	73.0	85.1	97.3		
399	1800	68.4	82.1	95.7			
444	2000	76.0	91.2	106.4			
488	2200	83.6	100.3				

D 105 - 22							
L. P. M.	R. P. M.	H.P. REQUIRED FOR PRESSURE IN BAR					
		69.0	82.8	96.6	110.4	138.0	151.7
218	1200	37.3	44.8	52.3	59.7	82.1	82.1
255	1400	43.7	52.4	61.1	69.9	96.0	96.0
262	1440	24.3	29.2	34.9	38.9	48.8	48.8
291	1600	49.8	59.8	69.8	79.7	99.7	
327	1800	56.0	67.2	78.4	89.6		
400	2000	68.5	82.2	95.9			



WASP PUMPS (INDIA) LLP

Regd. Sales Office & Works:
Plot No. 113, Road No. 21, Wagle Industrial Estate, Thane 400604
GST: 27AAFFW0904N1ZX, Tel: +91 98210 21183,
Email: wasppumps@rediffmail.com Website : www.wasppumps.com

