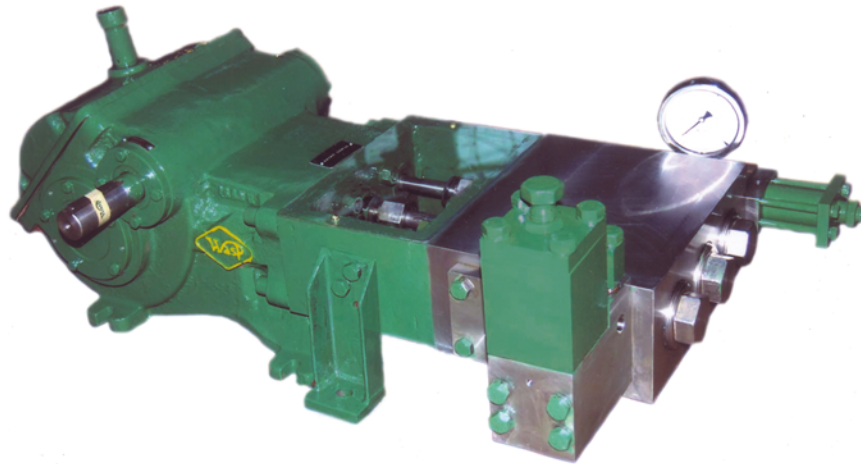
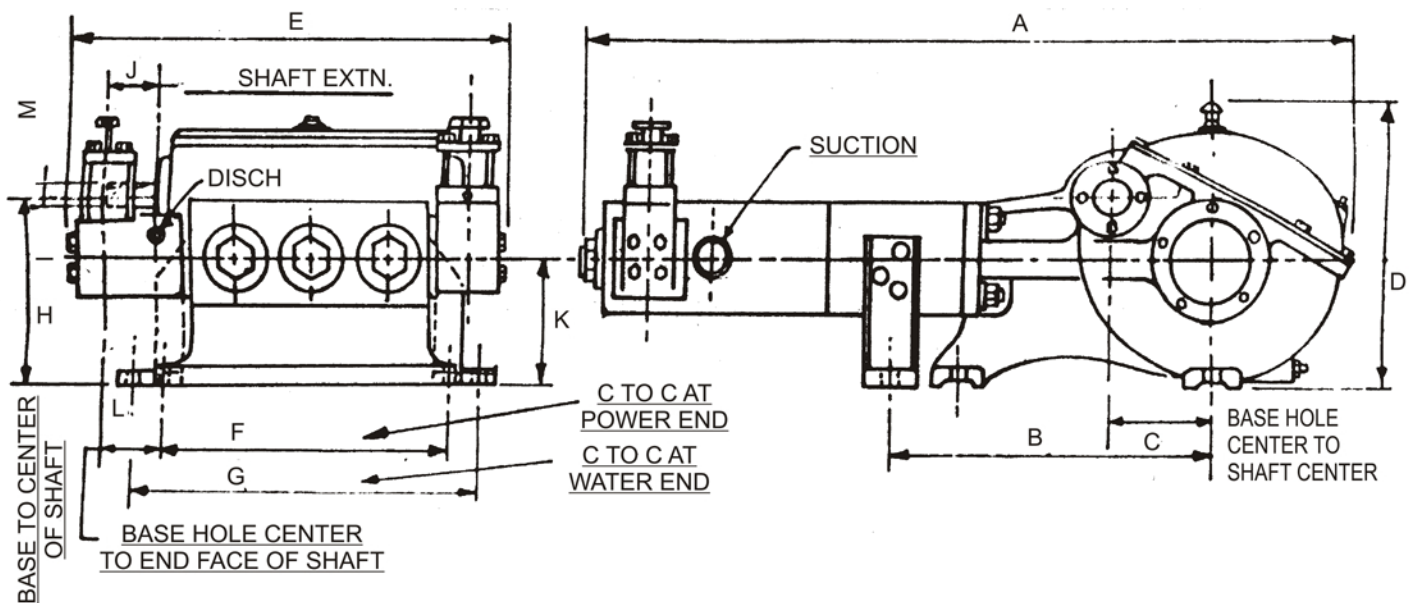


SI 4000/7500 Series

Very High Pressure Reciprocating Pumps



The 'WASP' Series SI - 7500 and SI - 4000 are Very High Pressure Triplex Reciprocating Pumps designed with precision and care to the exacting standards of modern times. They are manufactured in technical collaboration with FE Myers, U.S.A., one of the leading manufacturers of high quality pumps in the world and pioneers in high pressure pumping. Rigorous tests have proved the SI - 7500 and SI - 4000 to provide one of the most reliable performances. This versatile pump which can give upto 10,000 p.s.i. pressure, has various industrial applications.



DIMENSIONS IN MM

Pump Type	A	B	C	D	E	F	G	H	J	K	L	M
SI 4000	963	413	104.7	337	590	355.5	395	241.3	90	162	105	41.27 DIA
SI 7500	1076	464	138.11	432	660	406.4	428.62	266.7	87.31	180.97	105	41.27 DIA

SI 4000/7500 Series

Very High Pressure Reciprocating Pumps



FLUID - END COMPONENTS

Cylinder Body is machined from a solid forged block of stainless steel and ultrasonically tested to give the best performance under tough working conditions.

Discharge Valve Assembly is tapered guided and spring loaded for positive closing action and higher efficiency. Valve and valve seats are made of hardened stainless steel, precision machined and ground.

The fluid-end design provides an inline configuration of the suction valve assembly and plunger to allow virtually unrestricted fluid flow. It minimizes the feed pressure requirement.

Plungers are made from hardened stainless steel with a thick layer of hard chrome plating. They are precision machined, ground, lapped and polished.

Special packing seal is provided against plunger with no-wear sensitive lips.

Safety Valve is integrally mounted with fluid cylinder body. It is preset and sealed at the factory to prevent water pressure from exceeding the limit, thus protecting the pump and accessories.

Flange Mounted Automatic Unloader consists of spring loaded non-return valve and a by-pass control valve to adjust the pressure to the desired level. It is used along with a high pressure gun and foot operated valve when there is no need for sudden starting and stopping. When the line is shut-off instantaneously, the unloader bypasses the water back to the pump, at

practically water inlet pressure. It therefore unloads and makes the pump run on no load. If a gun is started the bypass is stopped and the pump is put back to original pressure.

POWER - END COMPONENTS

Gearcase of rugged cast iron protects the gears and serves as oil reservoir for continuous lubrication. Cover section quickly removable for easy service.

Pinion & main gear are helical cut and machined from high-strength alloy steel, and rotate in either direction. Integral pinion shaft is also machined from high-strength alloy steel.

Automotive type crankshaft is of high strength ductile iron.

Shaft bearings feature tapered roller bearings.

Crankshaft journal bearings are automotive type, steel-backed inserts.

Connecting links are ductile iron with replaceable bronze wrist-pin bearings. Wrist pins are press fitted into the crossheads.

Piston "pony" rods are smoothly ground and highly - polished stainless steel, threaded and pinned axially to crosshead.

Continuous splash lubrication is provided during either direction of rotation.

H. P. REQUIREMENT

Performance Table at 1800 RPM PINION SPEED

Pump Type	Capacity in LPM	HP													
		5	7.5	10	12.5	15	20	25	30	40	50	60	75	80	100
PRESSURE IN KG/CM ²															
SI 4014	18.8	101	151	202	258	309	384								
SI 4018	30.0		90	123	151	186	247	309	348						
SI 4022	45.0			78	101	123	162	208	247	392	460				
SI 4026	62.5				73	90	118	146	179	236	336				
SI 4028	72.5				62	73	101	129	151	202	258				
SI 4030	82.5						90	112	134	179	225				
SI 4032	95.0							95	118	157	197				
SI 4036	120.0							78	90	123	151				
SI 7514	20.0							282	450	612	704	834	844	936	1028
SI 7522	50.0										381	464	563	591	704
SI 7526	66.3										286	338	410	450	563
SI 7528	76.5										245	298	363	397	484
SI 7530	90.0										212	258	315	344	422
SI 7532	102.5										187	228	277	303	371
SI 7536	130.0										146	179	218	238	300



www.wasppumps.com

WASP PUMPS (INDIA) LLP

Regd. Sales Office & Works:
 Plot No. 113, Road No. 21, Wagle Industrial Estate, Thane 400604
 GST: 27AAFFW0904N1ZX, Tel: +91 98210 21183,
 Email: wasppumps@rediffmail.com Website : www.wasppumps.com

