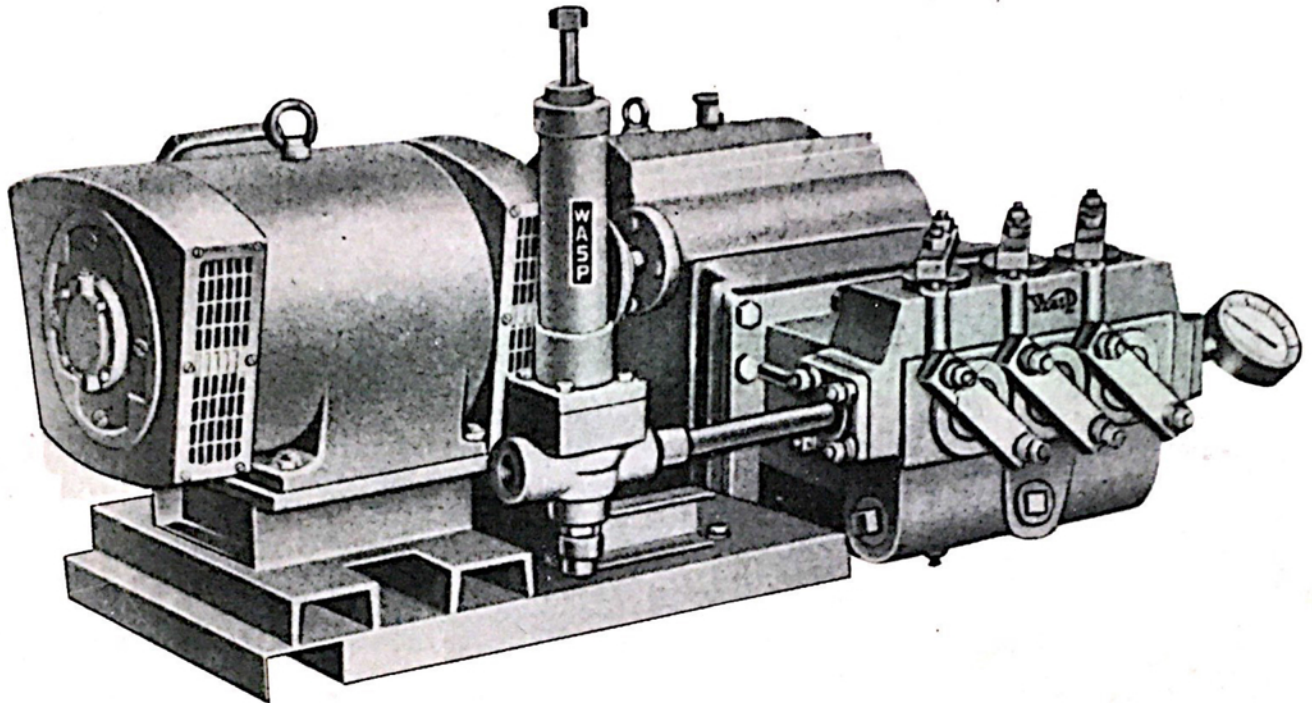
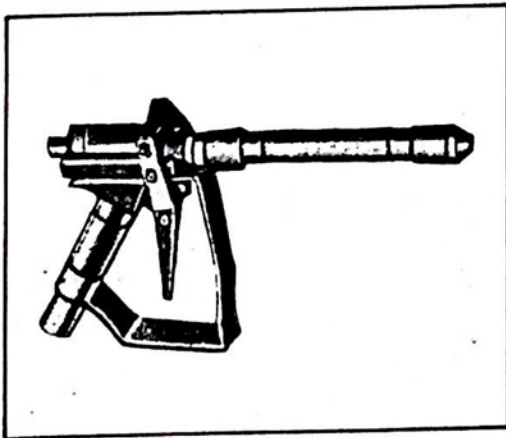


## 'SI' SERIES HIGH PRESSURE INDUSTRIAL PUMP

# Wasp<sup>®</sup>



### A most versatile pump to meet various needs of industries



It is the latest pump in the field of high pressure pumping, incorporating the latest developments.

"WASP" 'SI' Series High Pressure Pump is a triplex, single acting reciprocating pump. It has three cylinders phased at an angle of  $120^{\circ}$  to ensure a smooth and uniform flow.

It is built to withstand heavy duty operating conditions. The pump is designed and constructed in such a way that it gives a long-lasting trouble-free performance. The salient features are :-

## 'SI' SERIES HIGH PRESSURE INDUSTRIAL PUMP



### FLUID END COMPONENTS

- Cylinder body - Made of high strength cast iron.
- Cylinders - Tapered fit steel shells with chromium plating to resist wear and tear.
- Suction and discharge - Large suction openings provided on two sides and front. Either of them may be used. Two flanged discharge openings are provided on either side.
- Moulded plunger cups - Made from durable nitrile rubber.
- Plunger assembly - Plunger cup is backed by steel follower. The whole plunger assembly can be removed easily without dismantling piston rod from cross-head.
- Spring loaded flat valves - Made of stainless steel. These are designed for positive fast acting. Can be removed easily.
- Valve and cylinder caps - Held in place by heavy bolted clamps. Sealed perfectly by 'O' rings.

### POWER END COMPONENTS

- Gear case - Made from high strength cast iron. It serves as oil reservoir for constant splash lubrication of all working parts. Lid removable for easy inspection without draining oil
- Pinion and gear - Helical gear and pinion are made of alloy steel for smooth and noiseless performance. Permanently lubricated by self-oiling system.
- Bearings - Pinion shaft and crank shaft have tapered roller bearings for minimum friction and power loss.
- Connecting links - These are made of high strength alloy and have replaceable bronze wrist pin bushings and bimetallic crank shaft journal bearings.
- Cross-heads and piston rods - Cross-heads are made of high strength alloy and smooth finished stainless steel piston rod. Piston rods are threaded and pinned in perfect alignment with cross-head and cylinder.

### EASE OF MAINTENANCE

- Splash-type lubrication system provides continuous lubrication for all critical parts subject to wear and tear. This minimises maintenance and ensures trouble-free performance.
- All valves and piston assemblies can be easily reached through front and top cylinder body openings. Hence maintenance becomes very easy. Servicing of both water end and power end can be accomplished without disturbing pipeline.
- The pump incorporates a single helical gear reduction drive. It gets continuously lubricated and provides noiseless and smooth performance.

### ACCESSORIES

The pump can be supplied with a variety of accessories such as Gun, Nozzles, Lances, Unloader Valve, Relief Valve, etc. These accessories enable the pump to be used for various industrial cleaning applications as given under. Complete pump with motor and accessories can be mounted on a fourwheeled movable trolley to make it a mobile unit.

*As improvements are taking place continuously, the above specifications are subject to change without notice.*

### APPLICATIONS

(1) Industrial cleaning - Industries face a big problem in cleaning hard deposits of ash, soot, scales, sediments, rust and such other materials. These get deposited inside tubes, pipes, tanks, condensers, etc. Cleaning by manual operation is difficult and time consuming. Many times, cleaning of bent tubes from inside becomes very difficult when done manually.

Cleaning with a high pressure jet of water is the latest technique now available to solve all such problems. By directing a high pressure jet of water through various kinds of nozzles, the scales can be removed quickly and flushed away, resulting in a clean job. It saves cleaning time and thus reduces downtime. Hydraulic cleaning ensures plant operation at higher efficiency, and quick cleaning increases plant utilisation.

"WASP" 'SI' Series High Pressure Triplex Pump can be supplied with these accessories for various cleaning operations such as:

- Cleaning choked tubes, pipes, sewers, product pipelines, etc.
- Cleaning of tanks, barrels, vessels, condensers, heat exchanger tubes, conveyers, etc.
- Cleaning of turbines, quench boilers, smoke stacks, furnaces, moulding machines, etc.
- Descaling, cleaning of painted surfaces, removing rust and grease.
- Cleaning of chemical vessels, vats, kneaders, autoclaves, castings, etc.
- Cleaning of factory floors, plants and machinery, etc.

These industries can use the unit profitably:

- Refineries
- Petrochemical Industries
- Power Stations
- Mines
- Paint Industry
- Paper and Pulp Industry
- Processing Industries
- Chemical Industries

(2) Supplying water under heavy pressure for applications such as boiler feed, hydraulic testing, fire fighting and such other applications where high pressure water is required.

### SPECIFICATION

Rated capacity	14.75 M <sup>3</sup> /hr. (3.900 US. GPH)
Pinion shaft speed	
at rated capacity	1,440 RPM.
Gear reduction ratio	4.76 : 1
Rated pressure	84 Kg/Cm <sup>2</sup> (1,200 PSIG)
Cylinder bore	63.5 (2.500")
Piston stroke	95.25 (3.750")
Suction size	3" Pipe
Discharge size	1 1/4" Pipe
Pinion shaft dia.	41.275 (1.625")
Maximum KW at rated pressure	37.3 KW (50 H.P.)
Approximate weight	550 Kg. (1,215 lbs.)

*The capacity mentioned above is subject to variation of ± 10%*

For further details please contact :

## WASP PUMPS (INDIA) LLP

Regd. Sales Office & Works:

Plot No. 113, Road No. 21, Wagle Industrial Estate, Thane 400604

GST: 27A AFFW0904N1ZX, Tel: +91 98210 21183,

Email: wasppumps@rediffmail.com Website : www.wasppumps.com